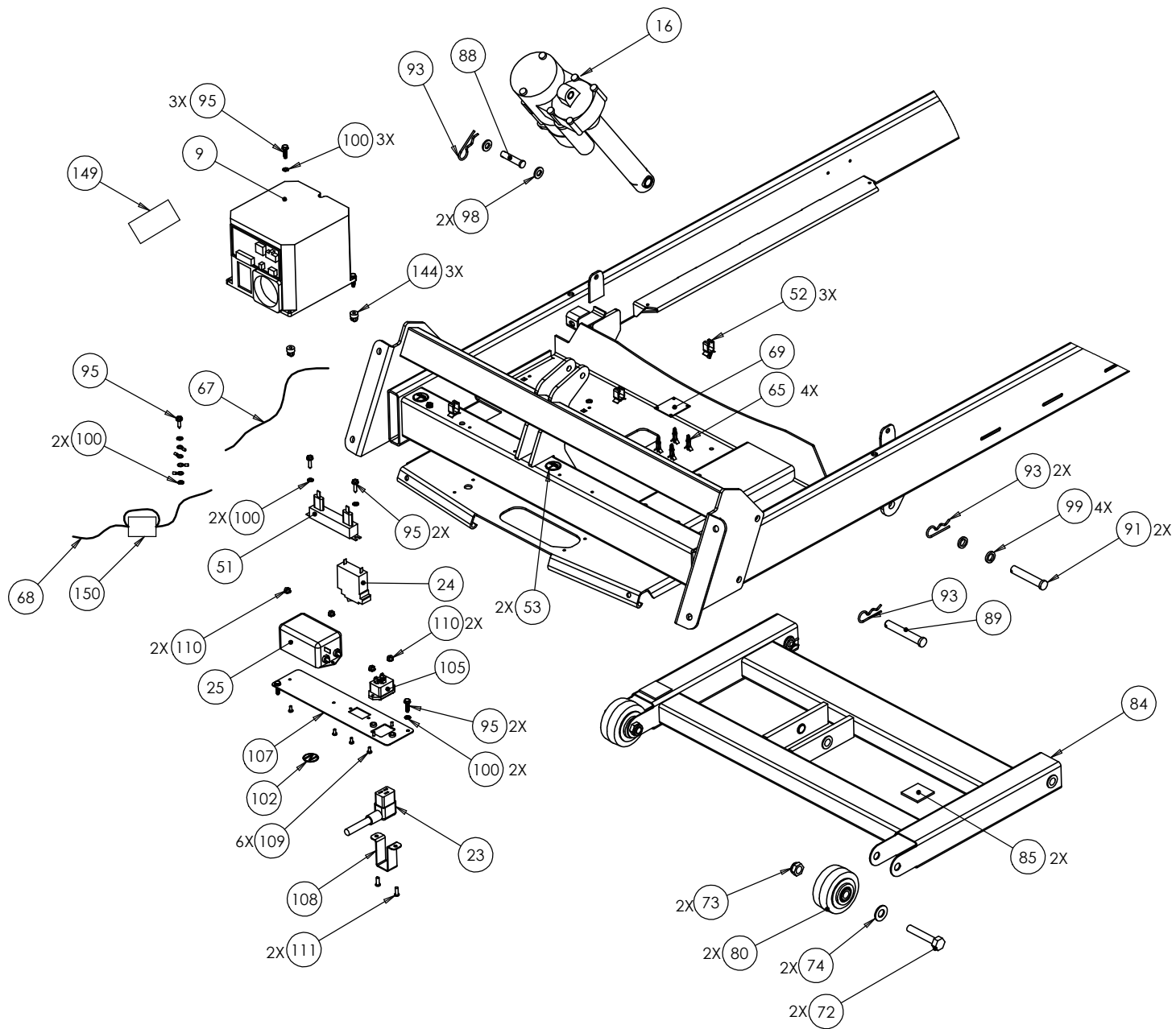


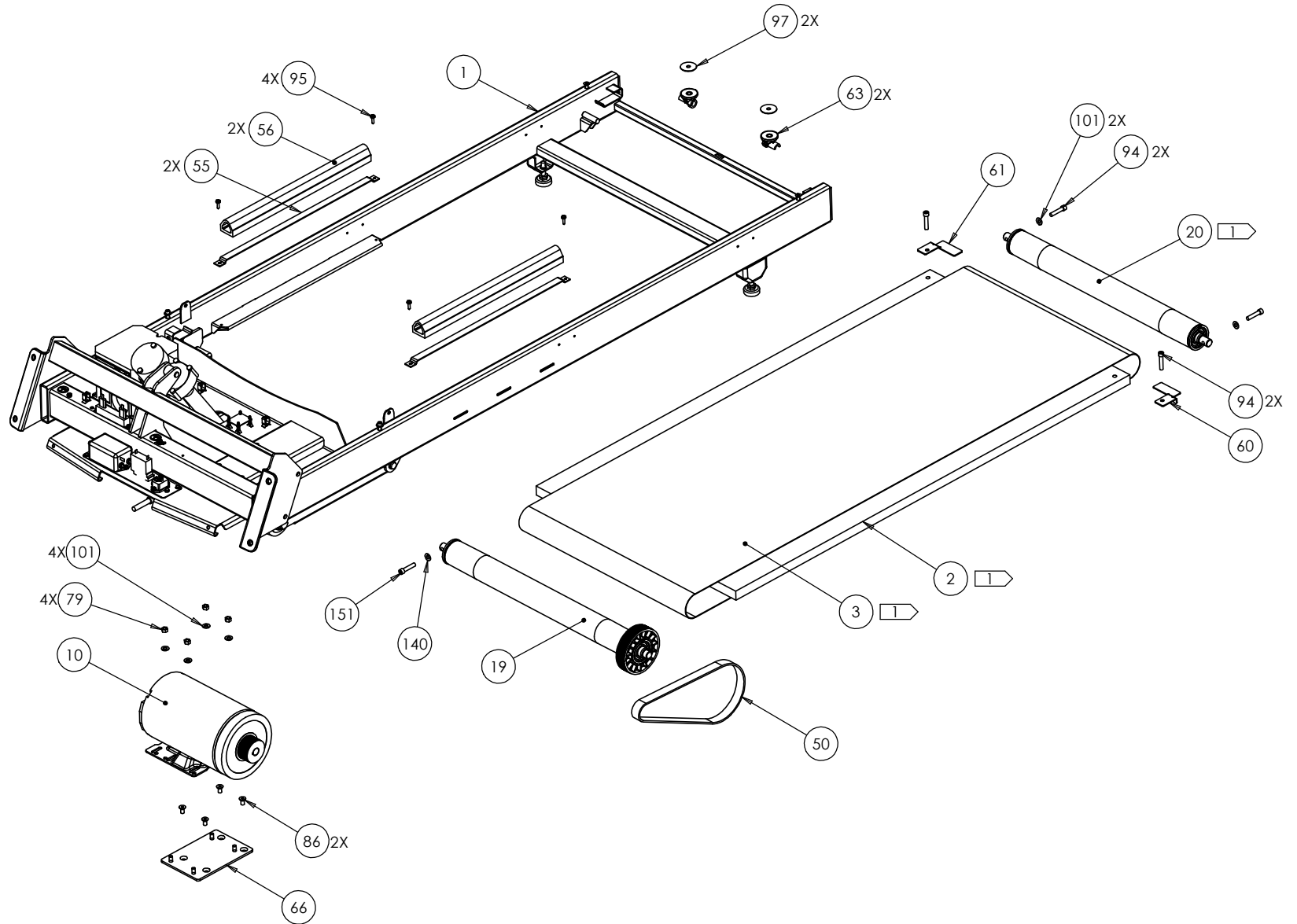


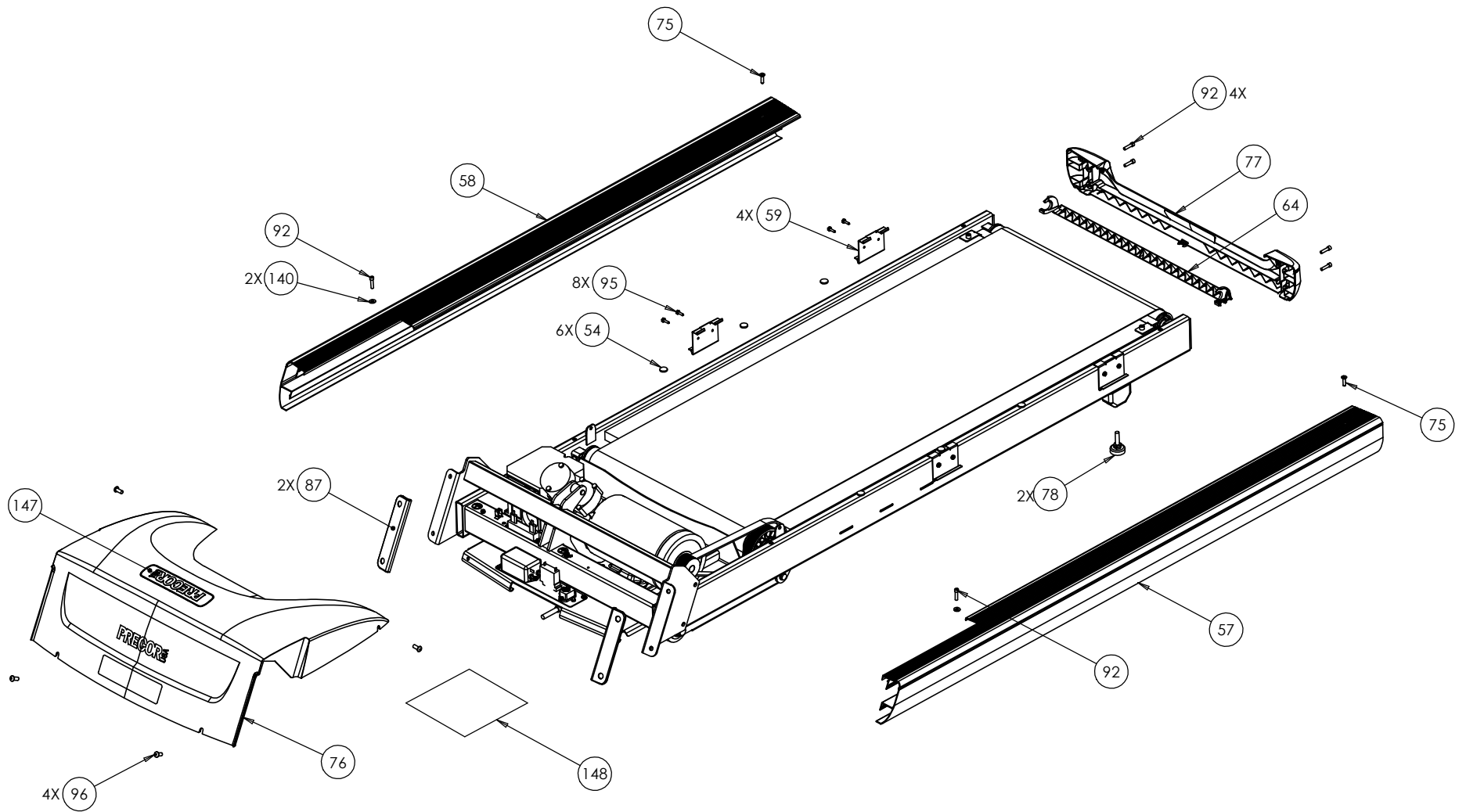
C932i, C946i	P/N : 35937-101	SUBREV : P
DRAWN BY : KAW	DATE : 8.29.12	SHEET 1 OF 8



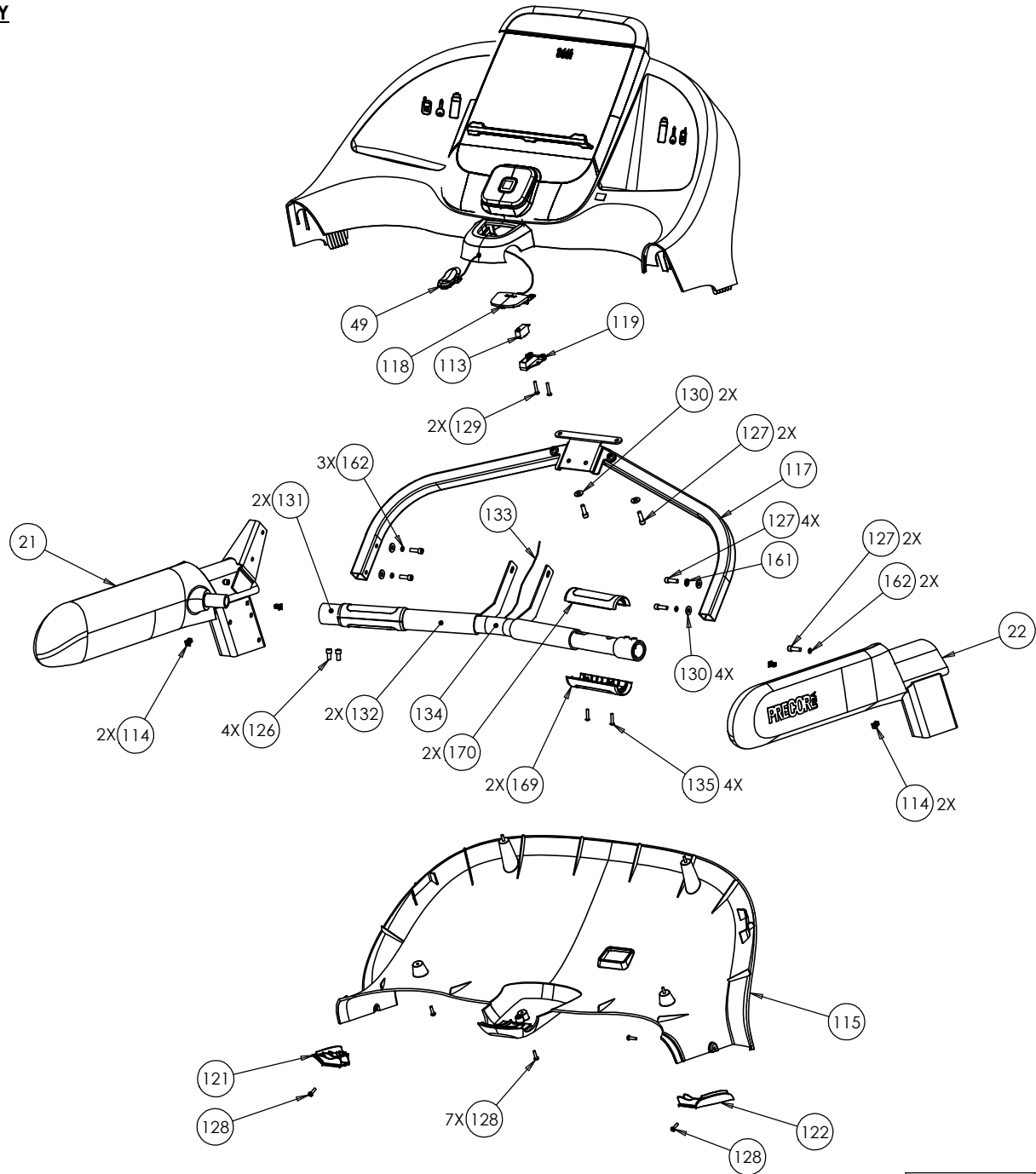
NOTES:

IF THE UNIT WAS BUILT PRIOR TO 6/21/2012, ORDER REPLACEMENT PARTS KIT (203).

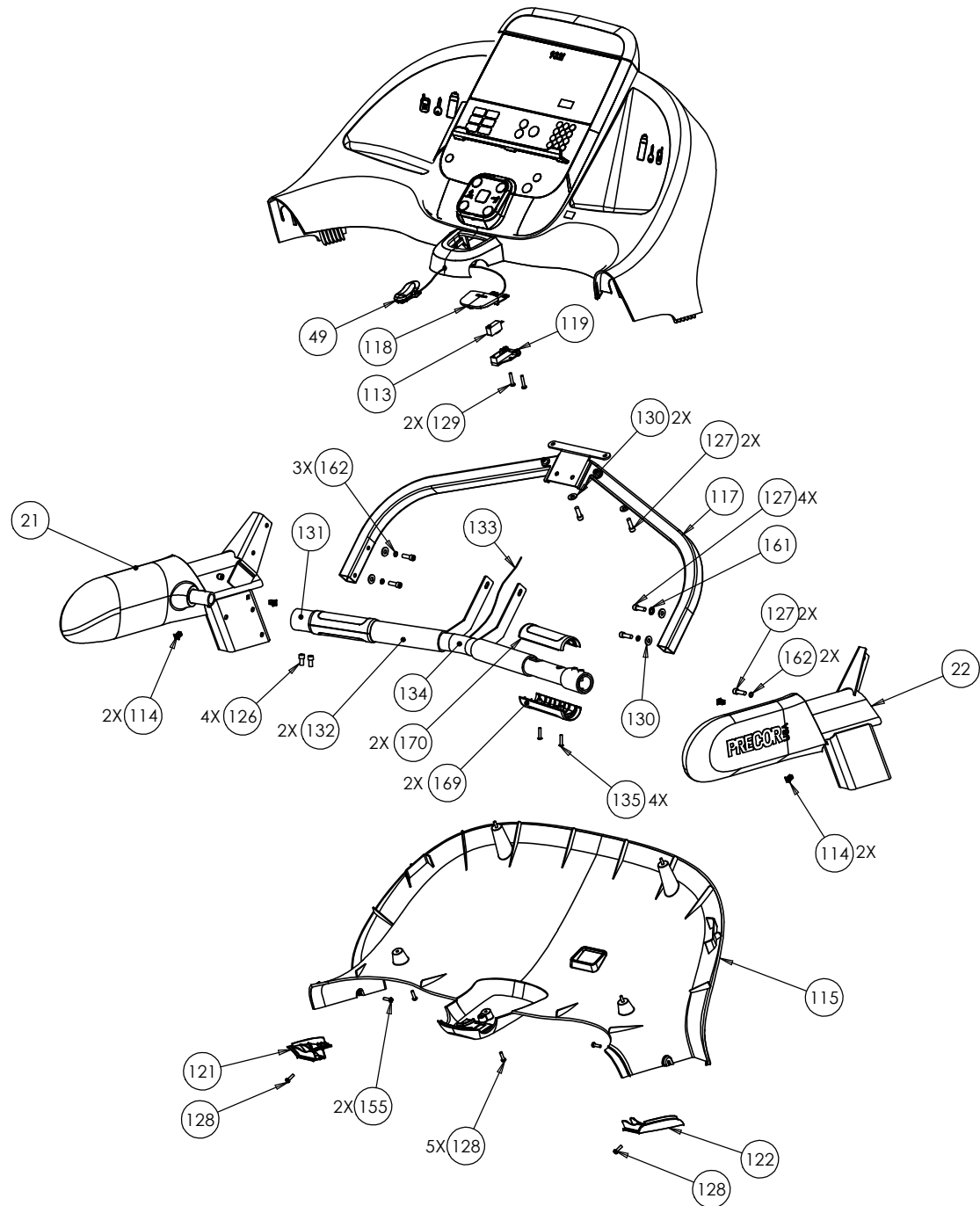




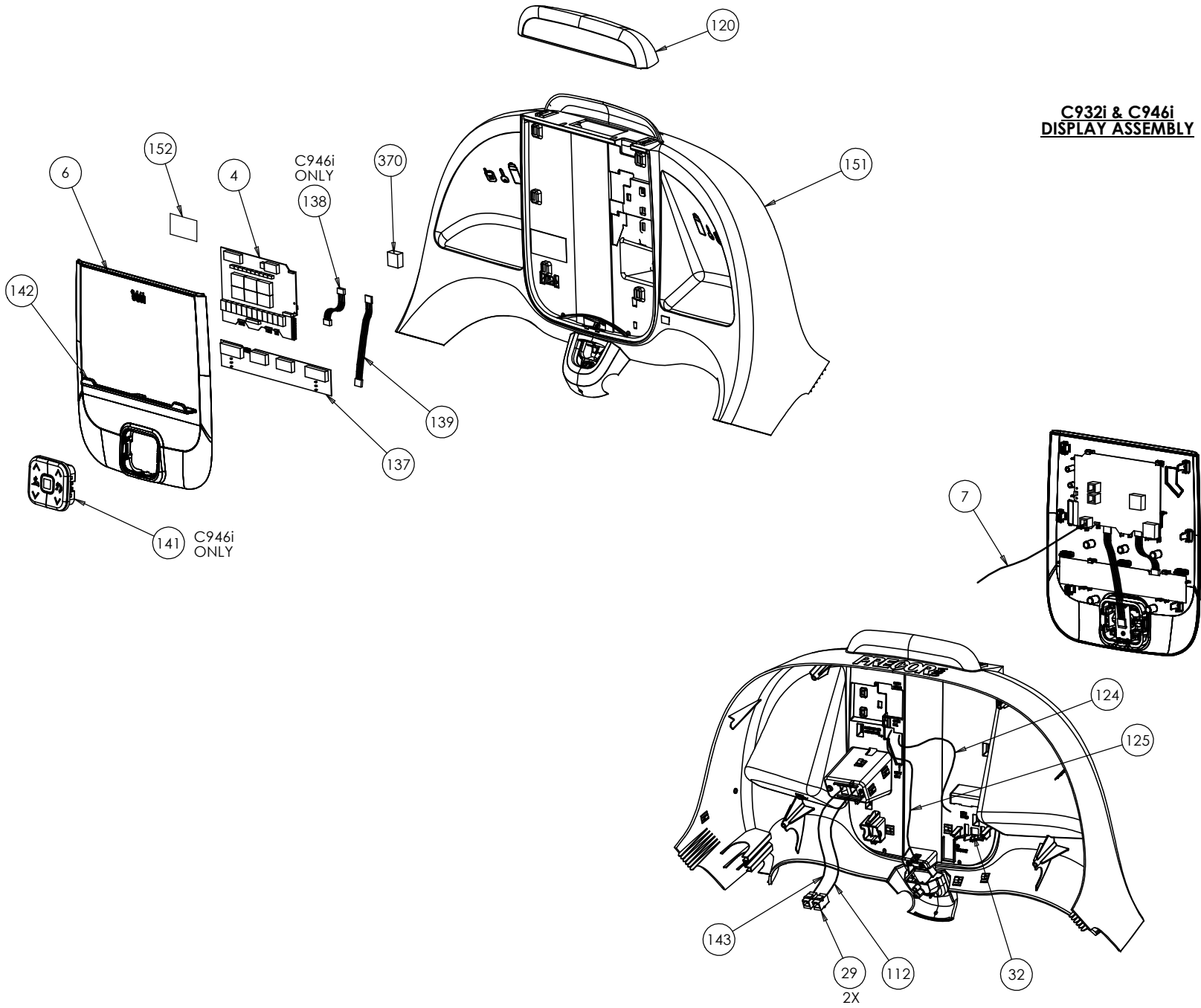
**C946i DISPLAY
ASSEMBLY**

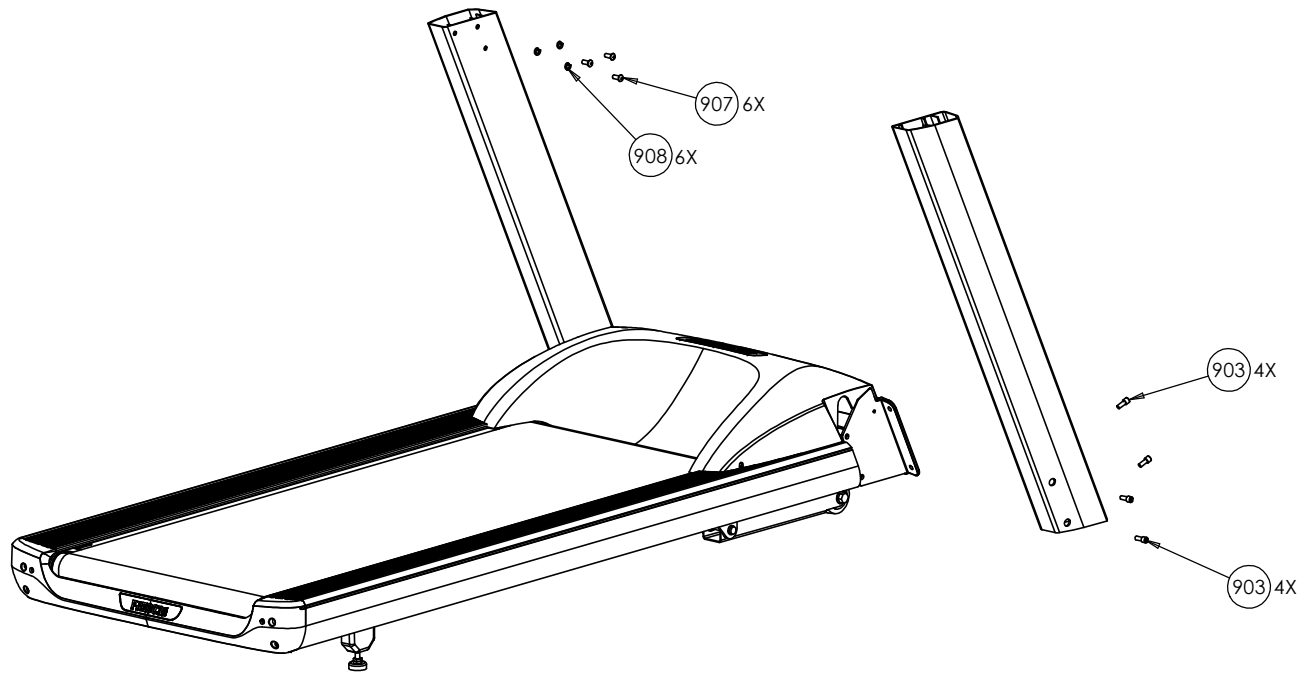
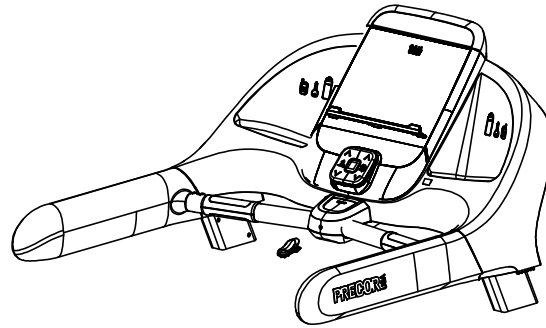


**C932i DISPLAY
ASSEMBLY**



**C932i & C946i
DISPLAY ASSEMBLY**





C946i (120 VAC) (serial code A925, ATRX)

Bubble Number	Part Number	Description
2	59120102	DECK WITH SHIPPER, 9.3X-07 W/BREAKI
3	36355140	RUNNING BELT, SIEGLING, 120 X 22, (
4	48434403	PCA,DISPLAY,CL
4.01	49807103	ASSY, UPCA & SW, C946I
6	49874101	ASSEMBLY, DISPLAY PANEL/LABELS, C94
7	49320080	ASSY, CABLE, MODULAR WITH FERRITE
9	49866110	MODULE, MOTOR DRIVE, AC INDUCTION,
10	35918101	ASSY, DRIVE MOTOR, AC, 2HP #6305 BR
16	301326101	LIFT ACTUATOR, 120 VAC, VERTICAL TR
19	35673102	ASSEMBLY, FRONT ROLLER 9.3X-07
20	35677103	ASSEMBLY, REAR ROLLER 9.3X-07,ZINC
21	35924105	ASSY,HANDRAIL, LONG, LEFT
22	35924106	ASSY,HANDRAIL, LONG, RIGHT
23	46985144	PWR CORD,125VAC,15A,NEMA 5-15RA/IEC
24	11462143	CKT BRKR,250V,MAGNETIC,ROCKER,1 PO
25	11224104	FILTER, POWER LINE, 250VAC, 16A, GE
29	11415102	COUPLER,MOD,8P8C,INLINE,SNAP-IN
32	43579108	ASSY BOARD, CHR, CONTACT PRIORITY/
49	44021105	CLIP ASSEMBLY
51	12248101	RES,WW,100 OHM,50W,10%,METAL CASE,.
52	11278101	CABLE CLAMP,INSERT
53	33984101	LABEL, SAFETY, GROUND SYMBOL
54	12861101	DISK, FELT, 1/8 THICK X 3/4 OD, ACR
55	35671101	STRAP, GFX 9.3X-07
56	35672101	SPRING, GFX 9.3X-07
57	35686101	TRIM, SIDERAIL, LEFT
58	35686102	TRIM, SIDERAIL, RIGHT
59	35813101	SUPPORT, SIDERAIL TRIM, STEEL BRACK
60	35690101	BRIDGE, ROLLER, LEFT
61	35690102	BRIDGE, ROLLER, RIGHT
62	35692102	COVER, FOOT, STONE GREY
63	35693101	PIVOT, DECK MOUNT, 9.3X-07
64	35695102	GUARD, BELT, BLACK
65	12869106	STANDOFF, PCB, M/M, LOCKING, 3/16"
66	35916101	PLATE, ADAPTER, MOTOR, VERTICAL, PA
67	49872012	CABLE, FILTER TO DRIVE MODULE,12"
68	49873010	CABLE,2C(1TW PR),16AWG,BRWN,250X032
72	HCTN050250	SCREW,HEX,GR 5,1/2-13X2-1/2,BLK SHA
73	KACN050019	LOCKNUT,HALF,1/2-13,ZN
74	WBZN050008	WASHER, FLAT,1/2,.086 BLK CVS

75	CNNN025100	SCREW, CAP, FLAT HEAD, STAINLESS, H
76	35921101	ASSEMBLY, HOOD, C946I, C932I, STONE
77	35922101	ASSEMBLY, ENDCAP, C946I, C932I, STO
78	35744101	FOOT, ADJUSTABLE
79	10043113	BEARING,FLANGE,OD=.62 ID=.5
79	KMCN031023	NUT, HEX, 5/16-18, ZINC
80	44270101	WHEEL, LIFT
81	35804101	ASSEMBLY, TARGA, RIGHT
82	35669101	TARGA, LEFT
85	35778101	BUMPER, LIFT PLATFORM
86	MACTN031063	SCREW, FLAT HD, HEX SOC, 5/16-18 X
87	35750101	COVER, TARGA BRACKET 9.3X-07
88	10401106	PIN,CLEVIS, 3/8 X 1.75, ZINC
89	45669107	PIN, LIFT PIVOT, 3.34, MUSHROOM HEA
91	45669111	PIN, LIFT PIVOT, MUSHROOM HEAD, .49
92	CATN025100	SCREW,SKHD,1/4-20X1,BLK SHARPERIZED
93	10400103	PIN, HITCH, .093 DIA, ZINC, #203
94	CARB031150	SHCS,5/16-18 X 1.50,STL,SILVER ZNCO
95	PLCN019075	SCREW,S/T,#10X3/4,WSHRHXHD,ZN, TYPE
96	TCNN031075	SCREW,BTHD,5/16-18X.75,SS
97	WABCN031006	WASHER, FEN, 5/16, ID=.331,
98	WACNN038009	WASHER, NYLON, .375 I.D.X.75O.D. X
99	WACNN050006	WASHER, NYLON, .50 I.D.X.75
100	WAMCN019002	WASHER, LOCK, EXT TOOTH, #10
101	WBCN031007	WASHER,FLT,5/16X.688X.065, ZN
102	37436101	LABEL, CHASIS NEUTRAL
103	44528006	ASSY,CBL,1 C0ND,14AWG,QK DISC,6",BR
104	44534008	ASSY,CBL,1COND,14AWG,QK DISC,8"
105	45381101	IEC 16/20A POWER CORD INLET
106	45383009	CBL,1C,14AWG,250X032 QD RECP/250X03
107	48760101	PLATE, POWER ENTRY
108	49484101	CLAMP, POWER CORD, 9.57
109	MGTN013038	SCREW,MCH,6/32X3/8,PANHD,PHIL,BLK S
110	KGCN013011	LOCKNUT, STARWASHER 6-32, #6
111	MGTN019050	SCREW, MACHINE, 10-24X1/2, PANHD, P
112	44905012	ASSY,CBL,MOD,8P8C,1-1,SILVER,12"
113	12259102	SWITCH,MICRO,PLUNGER,SPNC
114	12628101	INSERT, SQUARE, NYLON
115	35931101	94X JEN07 DASH, REAR
117	35909101	ASSY, PVS UPPER MOUNT
118	48710103	STOP BUTTON, GEN 06
119	48711102	SWITCH MOUNT, GEN 06

120	48713101	TOP, DISPLAY-C, BLANK
121	35928101	94X TRANSITION, JEN07 DASH - TARGA,
122	35928102	94X TRANSITION, JEN07 DASH - TARGA,
124	49330024	ASSY, CABLE, CHOKE-GND HHR TO DISP
125	48921017	ASSY, CABLE, UPPER SAFETY SWITCH, 1
126	CCNN025050	SCREW,SKHD,1/4-20 X0.50,SS,LK
127	CAMN025075	SCREW, SKHD, 1/4 X 0.75, ZN,(MECH P
128	MGCN016063	SCREW,MCH,8-32X5/8,PANHD,PHIL,
129	PMTN016088	SCREW,TCS,#8X7/8,PHIL,BLK SHARPERIZ
131	38048125	GRIP, PLASTISOL, 1.86L
132	38048121	GRIP, PLASTISOL, 6.0
133	47342025	ASSY, CABLE, HHR PCA TO GRIP, W/SH
134	35912101	WELDMENT, CROSSBAR, VERTICAL TREAD
135	TCNN016075	SCREW, BTHD, 8-32X.75,SS
136	49003403	PCA, SNAPDOME D-PAD
137	48947153	ASSY, PCA & SW, DISPLAY-C, METRICS,
138	48602005	ASSY,CABLE,6C,.1 CTR,1-1,GOLD,5"
139	48602009	ASSY,CABLE,6C,.1 CTR,1-1,GOLD,9"
140	WBCN025006	WASHER,FLT,1/4X.500X.063,ZN (MECH
141	48733131	D-PAD, 5 POSITION, TREAD, ICON
141	59212101	ASSY W/BOARD D-PAD, 5 POSITION, TRE
142	48712104	BOOK SUPPORT, DISPLAY-C, MAKROBLEND
143	48918012	ASSY, CABLE, MOD, 8P8C, 1-1, BLACK,
145	10123105	CABLE TIE, 6 LONG,WHITE,NYLON
147	35733101	BADGE, PRECOR, 9.3X-07/5.2X-07
148	48952101	LABEL, WIRING DIAGRAM, C952/C956I/
149	12000030	GASKET,EMI,FABRIC OVER FOAM W/PSA,1
150	12153101	FERRITE,CLAMP-ON,RND CABLE,28 MATL
151	CARB031200	SHCS,5/16-18 X 2.00,STL,SILVER ZNCO
152	49778101	FOAM, ANTI-STATIC 1" X 1" X .5" THI
153	MGCN013025	SCREW,MCH,6-32X1/4,PANHD,PHIL,
154	35932101	ASSY,DASH, FRONT
155	PGTN019050	SCREW,#10X1/2 ,SELF-DRILLING,BLK SH
161	WAMCN025002	WASHER, LOCK, EXT TOOTH, 1/4
162	WALCN025006	WASHER, SPLIT LOCK, 1/4 MED,
169	42714102	HHR SENSOR,BOTTOM
170	42713102	HHR SENSOR, TOP
201	57051101	9.3X BRACKET REPLACEMENT KIT
203	58040102	KIT, RUNNING BELT, DECK W/BREAK-IN_
210	58091101	KIT, BUTTON, QUICK START, TREAD
239	49003403	PCA, SNAPDOME D-PAD

240	48733131	D-PAD, 5 POSITION, TREAD, ICON
250	11075105	FUSE,2.00A,250VAC,SLO,RAD,UL248-14
270	WACNN050013	WASHER,FLAT,.503 X .756 X .125,NYLO
271	58117101	CS KIT, LIFT MOTOR VIBRATION NOISE
901	10186119	WRENCH, ALLEN, 3/16 X 4.5"
902	10186122	WRENCH, ALLEN, 1/4 X 3.5" X 6.0"
903	CAMN031075	SCREW,SKHD,5/16-18X0.75,ZN (MECH PL
904	CATN025088	SCREW,SKHD,1/4-20X7/8,BLK SHARPERIZ
905	CATN025200	SCREW,SKHD,1/4-20X2,BLK SHARPERIZED
906	MGCN016038	SCREW,MCH,8-32X3/8,PANHD,PHIL,
907	TCNN031075	SCREW,BTHD,5/16-18X.75,SS
908	WALCN031008	WASHER, 5/16 SPLIT LOCK, ZINC
999	49925105	LITERATURE KIT, C946I, EN UPDATED P